

# OUR PRODUCT





# PARS PANGAN COMPANY

## MANUFACTURER OF BALL AND CONTROL VALVES



### Introduction

Pars Pangan Company which is an affiliated incorporation to the Petroleum Equipment Industries Company (PEIC) was founded in 1992. It is the first and main Iranian company in designing and production of ball valves for Oil, Gas, Refinery, Chemical and Petrochemical plants, Power plants, Pipelines, and other industries. Pars Pangan manufacturing plant and facilities with its machinery, welding, assembly line, and test processes in an area over 16000 square meters are located in Shams Abad industrial zone near the suburb of Tehran. The production designs are based on the latest state-of-the-art technology worldwide and quality supervising system from famous and well-experienced companies.

The organization and adaptability of the company allow us to offer prompt after-sales services for all customers' requests.

The continuous and accurate quality controls during all production processes can bring the desired guarantee for the customers that they have purchased the most suitable and well-designed products to meet their requirements according to the relevant international standards.

### Fields of Activity

The production of ball valves is based on different designs and varieties such as casting, forging, split body, fully welded, floating, and trunnion mounted types with different connections, full and reduced bores in a wide range of high-quality materials.

The range of ball valves production covers from 1/4" to 56", Class 150, 300,600,800, 900,1500, 2500 lb.

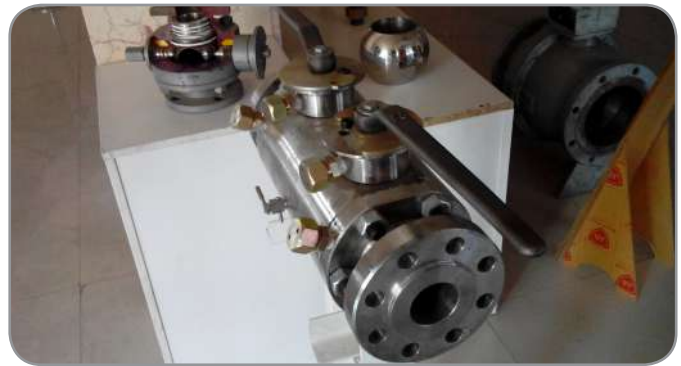


# RANGE OF PRODUCTION

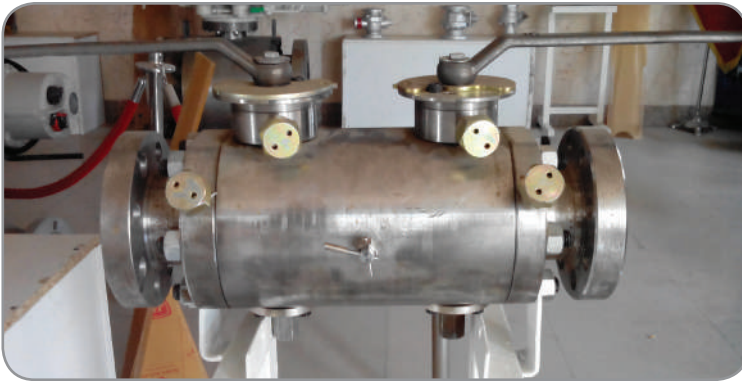


Row	Product Category	Subcategory	Size	Class	Standards	Test Facilities
1	Ball Valve Split Body	<ul style="list-style-type: none"> <li>Floating and Trunnion Mounted Type</li> <li>Top and Side Entry</li> </ul>	¼" to 56"	ANSI 150, 300,600, 800,900, 1500, (Class 2500 on request)	<ul style="list-style-type: none"> <li>API (6D,598, 6FA,607),</li> </ul>	Hydrostatic Test Air Test High Pressure Gas test PT MT UT Hardness Test Thickness Gauge PMI Test Cryogenic Test Fugitive emission Test
2	Ball Valve Fully Welded & Buried type	<ul style="list-style-type: none"> <li>Trunnion Mounted Type</li> <li>Side Entry</li> </ul>	2" to 56"	ANSI 150, 300,600,800 900,1500, (Class 2500 on request)	<ul style="list-style-type: none"> <li>BS (5351, 5404,1503, 1560,2080, 3239, 6755 Part 1&amp;2)</li> <li>ASME (Section V, VIII &amp; IX)</li> </ul>	
3	Special Material Ball Valve for Severe Service	<ul style="list-style-type: none"> <li>Metal to Metal</li> <li>Overlay Cladding</li> <li>Inconel</li> </ul>	Metal to Metal up to 48"	ANSI 150, 300,600,800 (Class 900, 1500,2500 on request)	<ul style="list-style-type: none"> <li>DIN</li> <li>NACE (MR0175, ISO 15156)</li> <li>ANSI (B1.20.1, B16.5, B16.10, B16.25, B16.34, B31.3, B31.4, B31.8, B46.1, B16.47)</li> </ul>	
4	Special Design Ball Valve	<ul style="list-style-type: none"> <li>Double Block &amp; Bleed</li> <li>Fully Jacketed</li> <li>Cryogenic</li> </ul>	Double Block & Bleed up to 20" Fully Jacketed up to 20" Cryogenic up to 20"	ANSI 150, 300,600,800 (Class 900, 1500,2500 on request)	<ul style="list-style-type: none"> <li>ASTM</li> <li>MSS-SP (6,25,44,45,61,72,82)</li> <li>BS EN ISO 17292</li> </ul>	

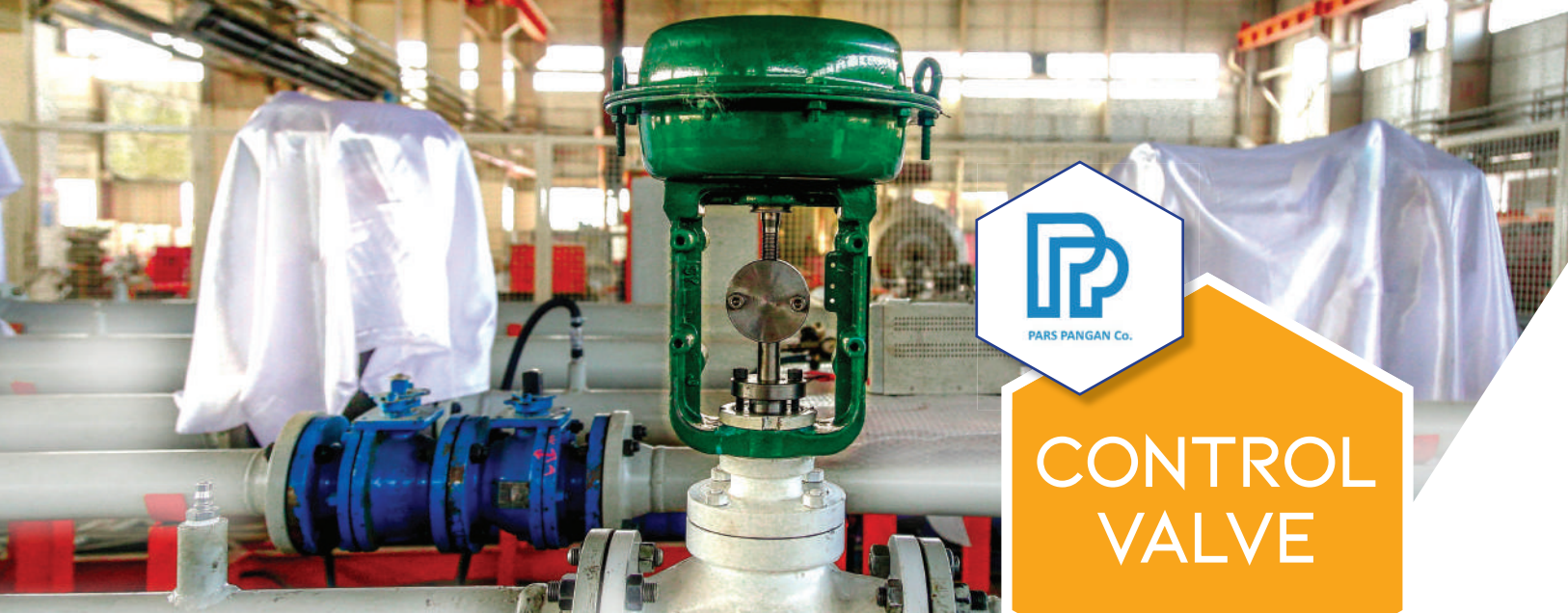
# OUR PRODUCT



# OUR PRODUCT



**PARS PANGAN COMPANY**  
**MANUFACTURER OF BALL AND CONTROL VALVES**



# CONTROL VALVE

Our comprehensive range of control valves covers a wide range of applications for general & severe services using specialized materials, trim, bonnets, etc. Our Control Valves are used in high-pressure drops, flashing or cavitation liquids, high-velocity gases, and induced noises in oil & gas applications. All designing, engineering, casting, machining, assembling and tests of control valves are done in Pars Pangan factory. We provide control valves according to the end-users' specific requirements and international standards with high-value quality and cost-effectiveness, in the shortest delivery lead times.

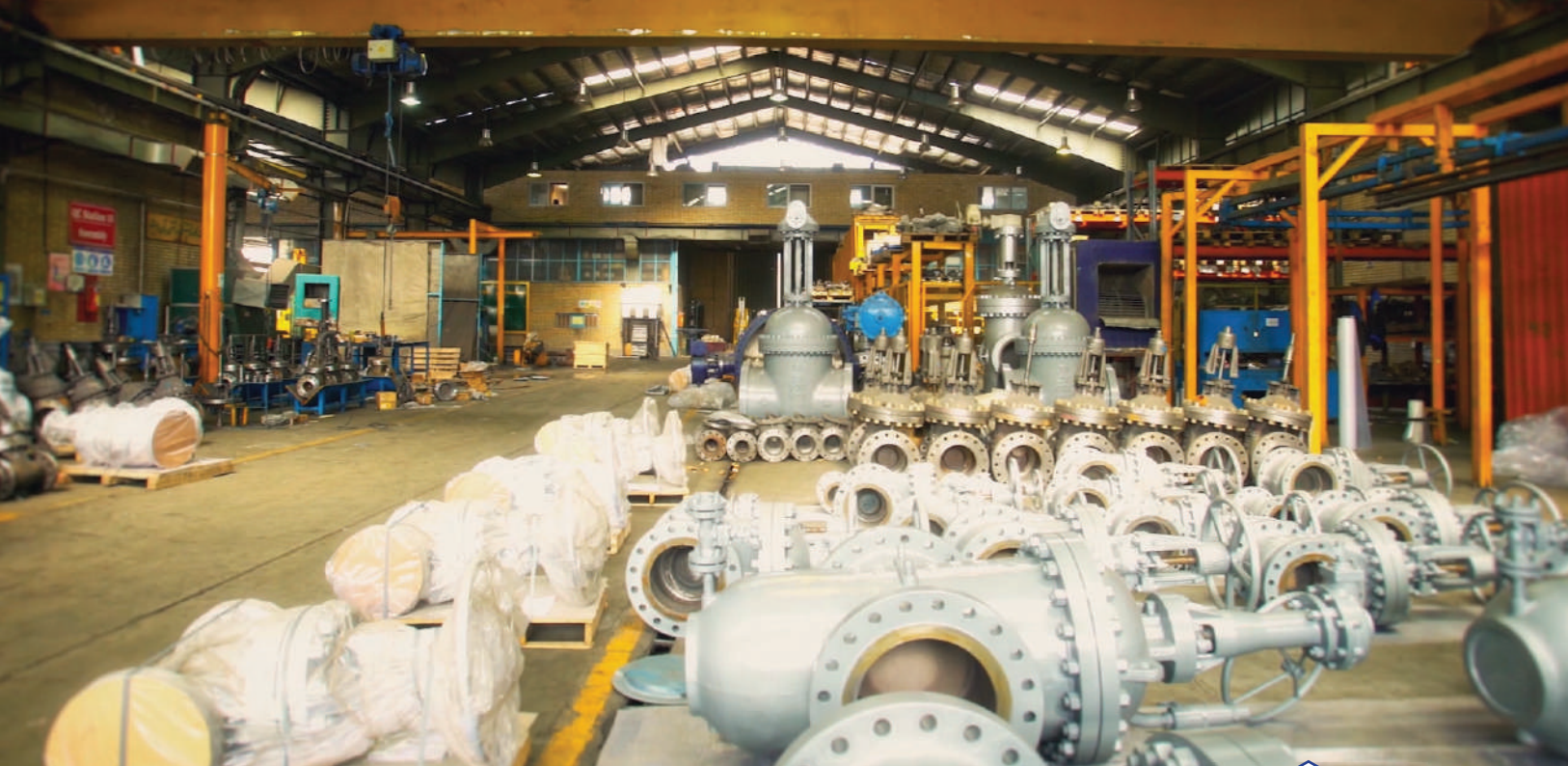
Row	Product Category	Subcategory	Size	Class	Test Facilities
1	Control Valve	Linear Globe Cage type	½ "to 24 "	ANSI 150, 300,600,800 900,1500, (Class 2500 on request)	<ul style="list-style-type: none"> <li>• ANSI B16.34</li> <li>• ANSI/ISA S75.01</li> </ul>
2		Ball Type	½ "to 24 "	ANSI 150, 300,600,800 900,1500, (Class 2500 on request)	<ul style="list-style-type: none"> <li>• ANSI/ISA S75.02</li> <li>• ANSI/ISA S75.05</li> <li>• ANSI/ISA S75.08</li> <li>• IEC 60534-2</li> </ul>
3		Butterfly Type	2" to 42"	ANSI 150, 300,600,800 900,1500, (Class 2500 on request)	<ul style="list-style-type: none"> <li>• IEC 60534-8-1</li> </ul>

- Ball Type Control Valve 4" ANSI 600 with Hydraulic Actuator for use in Sour Gas Services in Wellhead Facilities.
- Butterfly Type Control Valve 8" ANSI Class 150 with Pneumatic Piston Cylinder Actuator for use in Gas Storage Plants.
- Cage Type Control Valve 24" ANSI 300 with Pneumatic Piston Cylinder Actuator for use in Gas Field Development Plants.

# OUR PRODUCT



CONTROL VALVE



## GOSTARESH SHIR SAZI TEHRAN SUFA COMPANY (G.S.S.T.S)

KNOWLEDGE – BASED FIRM

MANUFACTURER OF DIFFERENT TYPES OF VALVES



### Introduction

In order to increase productivity and profitability and as a result of decrease charges and improvement the quality of services resulting from increased competition, Petroleum Equipment Industries Company (PEIC) decided to merge two of its subsidiaries, Gostareh Shir Sazi (G.S.S.) & Tehran Sufa (TS). Therefore, in 2020, Tehran Sufa Company, as one of the subsidiaries of PEIC was merged to Gostareh Shir Sazi Company.

Gostareh Shir Sazi (G.S.S.) with the aim of manufacturing different types of valves for Oil, Gas, Petrochemical, Refinery and Power plant industries was established by the cooperation of Petroleum Equipment Industries Co. and Energoinvest Co. in 1995. also Tehran Sufa (TS) was established by the cooperation of PEIC and China Sufa Co. in 1999. This cooperation was based on transfer of Know-how, technical aids and training courses from Energoinvest experts.

### Fields of Activity

Designing, manufacturing, assembling, production, sales and export of different types of industrial valves being used in the Oil, Gas, Petrochemical, Refinery and other industries as well as after-sales services.

### Other Activity

Professional Valve Reconditioning Center (PVRC), leaning on its confident resources, and technical support of GSS-TS-experts started to recondition various types of metallic valves applied in Oil, Gas, Petrochemical, Refinery and Power plant industries, while observing international standards such as API, DIN, BS, ANSI, ASME and ISO.





# RANGE OF PRODUCTION



Row	Product Category	Size	Class	Standards	Test Facilities
1	Gate, Globe, Check Valve (Swing, Dual Plate, Axial Flow)	½" to 56"	150 to 2500	<ul style="list-style-type: none"> <li>• API</li> <li>• BS</li> <li>• ASME</li> <li>• ISO</li> <li>• AWWA</li> <li>• ASTM</li> <li>• NACE</li> <li>• MSS</li> </ul>	<ul style="list-style-type: none"> <li>• DT &amp; NDT</li> <li>• (RT, UT, MT, PT)</li> <li>• Pressure Test</li> <li>• (Low Pressure &amp; High Pressure)</li> <li>• Hardness Test</li> <li>• DFT &amp; Adhesive Test</li> <li>• Roughness Test</li> <li>• SSC Test, HIC Test, Impact Test</li> </ul>
2	Forged Gate, Globe, Check Valve	¼" to 4"	150 to 2500		
3	Butterfly Valve (Concentric & Eccentric)	2" to 78"	150 to 900		
4	Bronze Valves (Gate, Globe & Check)	½" to 36"	125, 150, 200, 300, 400		
5	Through Conduit Gate Valve	2" to 48"	150 to 1500		
6	Needle Valve	¼" to 3"	600,900, 1500,3000, 6000,9000		
7	Diaphragm	2" to 24"	150		
8	Knife Gate Valve	2" to 24"	150		

# OUR PRODUCT

